

TAYLOR MORRISON SOMMERS BEND RECREATION CENTER 32176 GOLDBACK WAY TEMECULA, CA 92591 TRACT MAP 37368 LOT 17 - PA 23B LANDSCAPE DEVELOPMENT PLANS



TOTAL LANDSCAPED AREA: 57,104 SF

EXISTING LOAD DATA FOR POOL AREA

MAIN POOL AREA OCCUPANT LOAD DATA:
THE MAXIMUM FLOOR AREA PER OCCUPANT REQUIREMENTS FOR THE POOL AREA HAS BEEN DETERMINED BY USING CBC, CHAPTER 10, TABLE 1004.5.

MAIN POOL 3390 SF / 50 = 68 OCCUPANTS
SPA 250 SF / 50 = 5 OCCUPANTS
POOL / SPA DECK 7525 SF / 15 = 502 OCCUPANTS
TOTAL POOL OCCUPANCY = 575 OCCUPANTS

PER CBC CHAPTER 10, SECTION 1005.3.2, TOTAL MEANS OF EGRESS WIDTH IN INCHES SHALL NOT BE LESS THAN THE TOTAL OCCUPANCY LOAD SERVED BY THE MEANS OF EGRESS MULTIPLIED BY 2 INCHES.

TOTAL EXIT WIDTH REQUIRED (575 OCC. X 0.2" = 115")
= 115" REQUIRED EXIT WIDTH

EXIT WIDTH PER LOCATION (115" / 3 EXITS REQ. = 38.3") = 38.3" REQ. WIDTH PER EXIT
TOTAL EXIT WIDTH PROVIDED:
46" (EXIT 1) + 42" (EXIT 2) + 42" (EXIT 3)
= 122" EXIT WIDTH PROVIDED

SUBMITTAL LOG	DATE
AGENCY SUBMITTAL #1	04/29/20
CONSTRUCTION PLAN SUBMITTAL #2	06/01/20
ARCHITECTURE SUBMITTAL	06/17/20
CIVIL PRECISE GRADING SUBMITTAL	06/24/20
CONSTRUCTION PLAN SUBMITTAL #3	07/01/20
EMWD SUBMITTAL #2	08/27/20

ABBREVIATIONS
PA PLANTING AREA
TP TOP OF PLASTER
TF TOP OF FENCE
TW TOP OF WALL
FS FINISH SURFACE
FG FINISH GRADE
BC BACK OF CURB
FC FACE OF CURB
HP HIGH POINT
NC NOT IN CONTRACT
TYP TYPICAL
→ FLOW LINE 2% MIN.
← SHEET FLOW 2% MIN.

BrightView
Design Group

PLANNING
LANDSCAPE ARCHITECTURE
CURB DESIGN

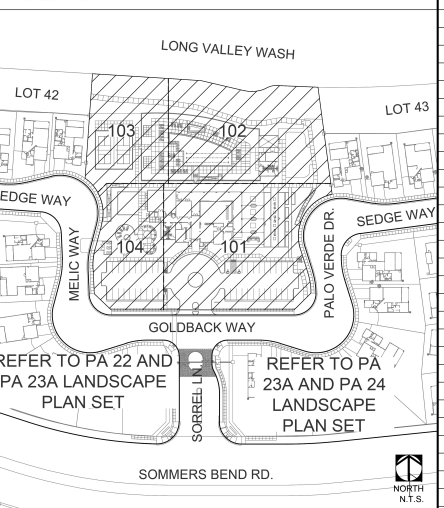
8 HUGHES, SUITE 100
IRVINE, CALIFORNIA 92618
(949) 238-4900

811
Know what's below.
Call 811 before you dig.
SERVED BY 811 CONNECT WITH
LIST OF PROVIDERS.

VICINITY MAP



INDEX MAP



SHEET INDEX

L0.000	TITLESHEET
L2.001	CONSTRUCTION NOTES
L2.002	CONSTRUCTION SCHEDULE
L2.101	CONSTRUCTION PLANS
L2.102	CONSTRUCTION PLANS
L2.103	CONSTRUCTION PLANS
L2.104	CONSTRUCTION PLANS
L2.401	CONSTRUCTION DETAILS
L2.402	CONSTRUCTION DETAILS
L2.403	CONSTRUCTION DETAILS
L2.404	CONSTRUCTION DETAILS
L2.405	CONSTRUCTION DETAILS
L2.406	CONSTRUCTION DETAILS
L2.407	CONSTRUCTION DETAILS
L2.408	CONSTRUCTION DETAILS
L2.409	CONSTRUCTION DETAILS
L2.410	CONSTRUCTION DETAILS
L2.411	CONSTRUCTION DETAILS
L2.412	CONSTRUCTION DETAILS
L2.413	CONSTRUCTION DETAILS
L2.414	CONSTRUCTION DETAILS
L3.000	IRRIGATION SCHEDULE
L3.001	IRRIGATION NOTES
L3.101	IRRIGATION PLANS
L3.102	IRRIGATION PLANS
L3.103	IRRIGATION PLANS
L3.104	IRRIGATION PLANS
L3.401	IRRIGATION DETAILS

L3.402	IRRIGATION DETAILS
L3.403	IRRIGATION DETAILS
L4.001	PLANTING NOTES
L4.002	PLANTING NOTES
L4.003	PLANTING SCHEDULE
L4.101	PLANTING PLANS
L4.102	PLANTING PLANS
L4.103	PLANTING PLANS
L4.104	PLANTING PLANS
L4.201	PLANTING DETAILS
L-SN1	LANDSCAPE STRUCTURAL GENERAL NOTES
L-SD1	LANDSCAPE STRUCTURES DETAILS
L-SD1.1	LANDSCAPE STRUCTURES DETAILS
PTD	PICKLEBALL COURT NOTES AND DETAILS

POINT OF CONNECTION 1:
WATER METER SIZE 1 1/2 INCH

IRRIGATED LANDSCAPE AREA
RECREATION CENTER 36,562 SF
PA 22 17,071 SF
PA 23 6,591 SF

TOTAL SQFT 60,224 SF

EMWD CONSERVATION PROJECT NUMBER
CFC 10011



ADDITIONAL NOTES

NOTE:
REFER TO THE GEOTECHNICAL REPORT AND CIVIL ENGINEERING PLANS FOR FLATWORK REINFORCEMENT, SUB-BASE AND STRUCTURAL THE RECOMMENDATIONS. ALL LANDSCAPE CONSTRUCTION DETAILS REFERENCE DESIGN INTENT, MATERIALS, COLOR AND FINISHES ONLY. CONTRACTOR TO SUBMIT SHOP DRAWINGS / SAMPLES TO THE LANDSCAPE ARCHITECT FOR REVIEW AND APPROVAL PRIOR TO CONSTRUCTION.

NOTE:
REFER TO STRUCTURAL ENGINEERING PLANS FOR STRUCTURAL DESIGN OF STEEL FABRICATION, FOOTINGS, ATTACHMENTS, AND REINFORCEMENT. ALL LANDSCAPE CONSTRUCTION DETAILS REFERENCE DESIGN INTENT, MATERIALS, COLOR, AND FINISHES ONLY. CONTRACTOR TO SUBMIT SHOP DRAWINGS / SAMPLES TO THE LANDSCAPE ARCHITECT FOR REVIEW AND APPROVAL PRIOR TO CONSTRUCTION.

NOTE:
LANDSCAPING FOR THIS PROJECT SHALL BE DESIGNED TO COMPLY WITH THE CITY'S WATER EFFICIENT LANDSCAPE ORDINANCE AND WITH THE GUIDELINES FOR IMPLEMENTATION OF THE WATER EFFICIENT LANDSCAPE ORDINANCE.

NOTE:
ALL WORK CONFORMS WITH:
- 2019 CALIFORNIA BUILDING CODE
- 2019 CALIFORNIA GREEN BUILDING CODE

GENERAL NOTES

- CONTRACTOR SHALL VERIFY WITH OWNER'S REPRESENTATIVE THAT PLANS ARE CURRENT AND APPROVED.
- WORK SHALL BE IN ACCORDANCE WITH THE REQUIREMENTS OF THE CITY OF TEMECULA.
- THE CONTRACTOR SHALL OBTAIN ALL NECESSARY AND/OR REQUIRED PERMITS AND PAY ALL RELATED FEES AND/OR TAXES REQUIRED TO INSTALL THE WORK ON THESE PLANS.
- THE CONTRACTOR SHALL BE APPROPRIATELY LICENSED AS REQUIRED BY THE STATE IN WHICH THE WORK TAKES PLACE.
- CONTRACTOR SHALL NOTIFY LANDSCAPE ARCHITECT IMMEDIATELY OF ANY ERRORS, OMISSIONS OR DISCREPANCIES IN EXISTING CONDITIONS OR WITHIN THE PLANS PRIOR TO BEGINNING THE WORK.
- DETERMINATION OF "EQUAL" SUBSTITUTIONS SHALL BE MADE ONLY BY THE LANDSCAPE ARCHITECT AND/OR OWNER.
- LANDSCAPE ARCHITECT SHALL BE NOTIFIED NO LESS THAN 48 HOURS IN ADVANCE OF ANY SITE OBSERVATIONS OR MEETINGS.
- SITE OBSERVATIONS AND MEETINGS SHALL INCLUDE:
A. PRE-CONSTRUCTION CONFERENCE
B. SELECTION AND TAGGING OF SPECIMEN TREES AND NURSERIES - LANDSCAPE CONTRACTOR TO COORDINATE WITH LANDSCAPE ARCHITECT, ALLOW A MINIMUM OF 48 HOURS.
C. LAYOUT AND INSTALLATION OF HARDSCAPE AND LANDSCAPE STRUCTURES IN RELATION TO DESIGN INTENT
D. LAYOUT AND INSTALLATION OF IRRIGATION SYSTEM INCLUDING COVERAGE TEST
E. PLANT MATERIAL QUALITY AND INSTALLATION AT THE PROJECT SITE
F. OBSERVATION TO ESTABLISH 90-DAY MAINTENANCE PERIOD (FINAL)
G. FINAL OBSERVATION AT THE END OF THE 90-DAY MAINTENANCE PERIOD (FINAL)
- NOTE: "LANDSCAPE" SHALL REFER TO ALL IMPROVEMENTS WITHIN THIS SET OF DOCUMENTS THAT HAVE BEEN DESIGNED BY THIS OFFICE.
- SITE OBSERVATION BY THE LANDSCAPE ARCHITECT DURING ANY PHASE OF THIS PROJECT DOES NOT RELIEVE THE CONTRACTOR OF HIS PRIMARY RESPONSIBILITY TO PERFORM ALL WORK IN ACCORDANCE WITH THE PLANS, SPECIFICATIONS AND GOVERNING CODES.
- THIS FIRM DOES NOT PRACTICE OR CONSULT IN THE FIELD OF SAFETY ENGINEERING. THIS FIRM DOES NOT DIRECT THE CONTRACTOR'S OBSERVATIONS, AND IS NOT RESPONSIBLE FOR THE SAFETY OF PERSONNEL OTHER THAN OUR OWN ON THE SITE. THE SAFETY OF OTHERS IS THE RESPONSIBILITY OF THE CONTRACTOR. THE CONTRACTOR SHOULD NOTIFY THE OWNER IF HE CONSIDERS ANY OF THE RECOMMENDED ACTIONS PRESENTED HEREIN TO BE UNSAFE.
- CITY OF TEMECULA LANDSCAPE INSPECTION NOTE: A MINIMUM OF THREE INSPECTIONS WILL BE REQUIRED PER CONSTRUCTION PHASING. THE FIRST IS AN IRRIGATION INSPECTION TO VERIFY PIPE DEPTHS AND IRRIGATION MATERIAL CONFORMANCE. THE SECOND IS A LANDSCAPE INSPECTION TO VERIFY IRRIGATION COVERAGE AND OPERATION, AND TO VERIFY THAT ALL PLANTINGS HAVE BEEN INSTALLED CONSISTENT WITH THE APPROVED CONSTRUCTION PLANS. THE THIRD IS A FINAL INSPECTION ONCE MULCH HAS BEEN LAID AND ALL PLANT MATERIAL AND IRRIGATION SYSTEMS ARE IN PLACE. CONTACT THE PLANNING DEPARTMENT TO SCHEDULE LANDSCAPE INSPECTIONS.

NOTIFICATIONS

CLIENT	LANDSCAPE ARCHITECT
TAYLOR MORRISON 4696 MACARTHUR COURT, 8TH FLOOR NEWPORT BEACH, CA 92660 PH: 949.341.2202 CONTACT: JARED ARONOWITZ EMAIL: JARONOWITZ@TAYLORMORRISON.COM	BRIGHTVIEW DESIGN GROUP 8 HUGHES, SITE 150 IRVINE, CA 92618 PH: 949.288.4554 CONTACT: HWA WANG EMAIL: HWA.WANG@BRIGHTVIEW.COM
CIVIL ENGINEER	ARCHITECT
ADAMS STREETER CIVIL ENGINEERS 1655 VON KARMAN AVE, STE 150 IRVINE, CA 92608 PH: 949.474.2330 CONTACT: NICK STREETER EMAIL: NSTREETER@ADAMS-STREETER.COM	WHA, INC. 2550 REHILL AVE, STE 200 SANTA ANA, CA 92705 PH: 949.250.0607 CONTACT: DAVID HERRICK EMAIL: DAVIDH@WHAINC.COM
LIGHTING/ELECTRICAL	AQUATIC
CANDELA ENGINEERING 27201 CALLE JUANITA DANA POINT, CA 92624 PH: 949.201.1333 CONTACT: DON DIMOZIO EMAIL: DON@CANDELAENGINEERING.COM	AQUATIC TECHNOLOGIES 32322 PASEO ADELANTO, STE A SAN JUAN CAPISTRANO, CA 92705 PH: 949.493.9548 CONTACT: DAVID B. HART EMAIL: DAVE@AQUATICTECHNOLOGIES.COM
STRUCTURAL ENGINEER	DRY UTILITIES
ISE 40810 COUNTY CENTER DR, STE 110 IRVINE, CA 92619 PH: 951.397.2231 CONTACT: SHAWN LOTHROP EMAIL: SHAWN@ISENGINEERS.COM	UTILITY SPECIALISTS 41870 KALMA ST, STE 125 MURRIETA, CA 92562 PH: 951.319.7757 CONTACT: TONY NISSEN EMAIL: TUN@UTILITIESPECIALISTS.COM
PICKLEBALL PT SLAB	SOILS ENGINEER
PTD, INC. 2039 PORTERFIELD WAY, SUITE L IRVINE, CA 92714 PH: 909.985.0787 CONTACT: CLARK CRUMP EMAIL: CCURUMP@DESIGNBIZ	NMG GEOTECHNICAL, INC. 17991 FITCH IRVINE, CA 92614 PH: 949.442.2442 CONTACT: TED MIYAKE EMAIL: TMIYAKE@NMGGEOTECH.COM

APPROVALS

PLAN CHECK #
COMMUNITY DEVELOPMENT DEPARTMENT CITY OF TEMECULA, CA
ACCEPTED (PRINT NAME) SIGNATURE DATE
BUILDING & SAFETY DEPARTMENT CITY OF TEMECULA, CA
ACCEPTED (PRINT NAME) SIGNATURE DATE



TAYLOR MORRISON
SOMMERS BEND REC CENTER
TRACT NO. 37368 LOT 17
LANDSCAPE DEVELOPMENT PLANS
32176 GOLDBACK WAY - TEMECULA, CALIFORNIA
CONSTRUCTION PLAN SUBMITTAL #3

PROJECT STATUS LOG

PLAN SET / ISSUE DATE

BIDDING JOB NUMBER: 1739772
DRAWN BY: ADHW
PRINT DATE: 08/27/20
APP#084-640-011
PA20-0276

TITLESHEET

SHEET NUMBER: L0.000

L:\173072-SOMMERS BEND\04\02\02\SHEETS\01_RECREATIONCENTER2\W04.L00 - PLANTING SCHEDULE.DWG

8/27/2020 3:25 PM

TREES	BOTANICAL / COMMON NAME	SIZE	UNITS	WUCOLS	SPACING	QTY	REMARKS
	ARBUTUS X 'MARINA' ARBUTUS MULTI-TRUNK	24" BOX - STANDARD TRUNK	E.A.	M	PER PLAN	7	
	CERCIS CANADENSIS 'OKLAHOMA' OKLAHOMA REDBUD	24" BOX - MULTI TRUNK	E.A.	M	PER PLAN	5	9-10' X 4-5'
	GEIJERA PARVIFLORA AUSTRALIAN WILLOW	36" BOX - STANDARD TRUNK	E.A.	M	PER PLAN	33	12-14' X 5-6'
	OLEA EUROPAEA 'SWAN HILL' TM SWAN HILL OLIVE	60" BOX - MULTI TRUNK	E.A.	L	PER PLAN	10	4' - 5' CLEAR TRUNK 7-9' X 6-7'
	PARKINSONIA X 'DESERT MUSEUM' DESERT MUSEUM PALO VERDE	48" BOX - MULTI TRUNK	E.A.	L	PER PLAN	2	VASE SHAPE
	PHOENIX DACTYLIFERA 'MEDJOOOL' DATE PALM	25' BTH	E.A.	L	PER PLAN	12	MATCHING HEIGHT, STRAIGHT TRUNK 12" HEIGHT AIR ROOTS MAX.
	PLATANUS RACEMOSA 'ROBERTS' ROBERTS CALIFORNIA SYCAMORE	36" BOX - STANDARD TRUNK	E.A.	M	PER PLAN	14	13-15' X 6-8'
	QUERCUS AGRIFOLIA COAST LIVE OAK	48" BOX - STANDARD TRUNK	E.A.	L	PER PLAN	1	16-18' X 8-9'
	ULMUS PARVIFOLIA 'TRUE GREEN' TRUE GREEN ELM	36" BOX - STANDARD TRUNK	E.A.	L	PER PLAN	3	12-14' X 5-6'
	WASHINGTONIA ROBUSTA MEXICAN FAN PALM	36" BOX - STANDARD TRUNK	E.A.	L	PER PLAN	6	10' - 12' BTH 8'-9'

SHRUBS	BOTANICAL / COMMON NAME	SIZE	UNITS	WUCOLS	SPACING	QTY	REMARKS
	AGAVE X 'BLUE GLOW' BLUE GLOW AGAVE	15 GAL	E.A.	L	36" o.c.	43	
	ALOE X 'BLUE ELF' ALOE	5 GAL	E.A.	L	24" o.c.	292	
	ARISTIDA PURPUREA PURPLE THREEAWN	1 GAL	E.A.	L	24" o.c.	301	
	ASCLEPIAS FASCICULARIS NARROW LEAVED MILKWEED	5 GAL	E.A.	L	36" o.c.	43	
	CAREX DIVULSA BERKELEY SEDGE	1 GAL	E.A.	L	30" o.c.	754	
	CELANOTHUS MARITIMUS 'SIERRA GOLD' POINT SIERRA CEANOTHUS	5 GAL	E.A.	L	60" o.c.	253	
	EREMOPHILA GLABRA 'MINGENEW GOLD' EMU BUSH	5 GAL	E.A.	L	48" o.c.	141	
	ERIGERON GLAUCUS 'WAYNE RODERICK' SEASIDE DAISY	1 GAL	E.A.	L	24" o.c.	371	
	EUPHORBIA RIGIDA YELLOW SPURGE	5 GAL	E.A.	L	48" o.c.	40	
	MUHLENBERGIA CAPILLARIS 'REGAL MIST' PINK MUHLY GRASS	1 GAL	E.A.	L	30" o.c.	134	
	GALVEZIA SPECIOSA ISLAND BUSH SNAPDRAGON	5 GAL	E.A.	L	36" o.c.	14	
	HESPERALOE PARVIFLORA RED YUCCA	5 GAL	E.A.	L	48" o.c.	23	
	HETEROMELES ARBUTIFOLIA TOYON	15 GAL	E.A.	L	96" o.c.	4	
	LANTANA X 'NEW GOLD' NEW GOLD LANTANA	5 GAL	E.A.	L	36" o.c.	243	
	LAVANDULA ANGUSTIFOLIA ENGLISH LAVENDER	5 GAL	E.A.	L	36" o.c.	98	
	LAVANDULA STOECHAS 'OTTO QUAST' SPANISH LAVENDER	5 GAL	E.A.	L	36" o.c.	88	
	LEUCOPHYLLUM CANDIDUM VIOLET SILVERLEAF	5 GAL	E.A.	L	36" o.c.	66	
	LIGUSTRUM TEXANUM TEXAS PRIVET	15 GAL	E.A.	M	36" o.c.	27	COLUMN, 5' HT.
	LIGUSTRUM TEXANUM TEXAS PRIVET	5 GAL	E.A.	M	36" o.c.	87	STANDARD
	MACFADYENA LINGUIS-CATI CAT'S CLAW CREEPER	5 GAL	E.A.	L	36" o.c.	3	
	MIMULUS AURANTIACUS BUSH MONKEY FLOWER	5 GAL	E.A.	L	30" o.c.	49	
	NOLINA PARRYI PARRY BEARGRASS	15 GAL	E.A.	L	48" o.c.	9	
	OLEA EUROPAEA 'LITTLE OLLIE' TM LITTLE OLLIE OLIVE	5 GAL	E.A.	L	36" o.c.	99	
	PENNISSETUM SPATHOLATUM RYE PUFFS	1 GAL	E.A.	L	24" o.c.	69	
	RHAMNUS CALIFORNICA 'EVE CASE' CALIFORNIA COFFEEBERRY	5 GAL	E.A.	L	48" o.c.	5	
	SALVIA CHAMAEDRYOIDES MEXICAN BLUE SAGE	5 GAL	E.A.	L	36" o.c.	23	
	SALVIA CLEVELANDI 'WINIFRED GILLMAN' CLEVELAND SAGE	5 GAL	E.A.	L	36" o.c.	43	
	SALVIA X 'BEE'S BLISS' BEE'S BLISS SAGE	5 GAL	E.A.	L	60" o.c.	3	
	SINYCHNUM BELLUM BLUE-EYED GRASS	1 GAL	E.A.	L	16" o.c.	379	
	TEUCRIUM COSSONII CREEPING GERMANDER	1 GAL	E.A.	L	24" o.c.	38	
	VERBENA LILACINA 'DE LA MINA' LILAC VERBENA	5 GAL	E.A.	L	36" o.c.	84	
	WESTRINGIA FRUTICOSA COAST ROSEMARY	5 GAL	E.A.	L	48" o.c.	239	
	EDIBLE GARDEN SEASONAL HERB MIX - BEST AVAILABLE	1 GAL	M		16" o.c.	400 SF	
	TURF MARATHON I SOD	TURF	H			3560 SF	

BrightView
LANDSCAPE ARCHITECTURE
DESIGN DESIGN
8 HUGHES, SUITE 100
IRVING, CALIFORNIA 92618
(949) 238-8600

PROJECT: 173072-SOMMERS BEND REC CENTER
SHEET: 04-02-02-PLANTING SCHEDULE

PLAN REVISION DESCRIPTION

811
Know what's below.
Call 811 before you dig.
THE 811 CALL CENTER IS A FREE SERVICE.
FOR A LIST OF PARTICIPANTS.

TAYLOR MORRISON
SOMMERS BEND REC CENTER
TRACT NO. 37368 LOT 17
LANDSCAPE DEVELOPMENT PLANS
32176 GOLDBACK WAY - TEMECULA, CALIFORNIA

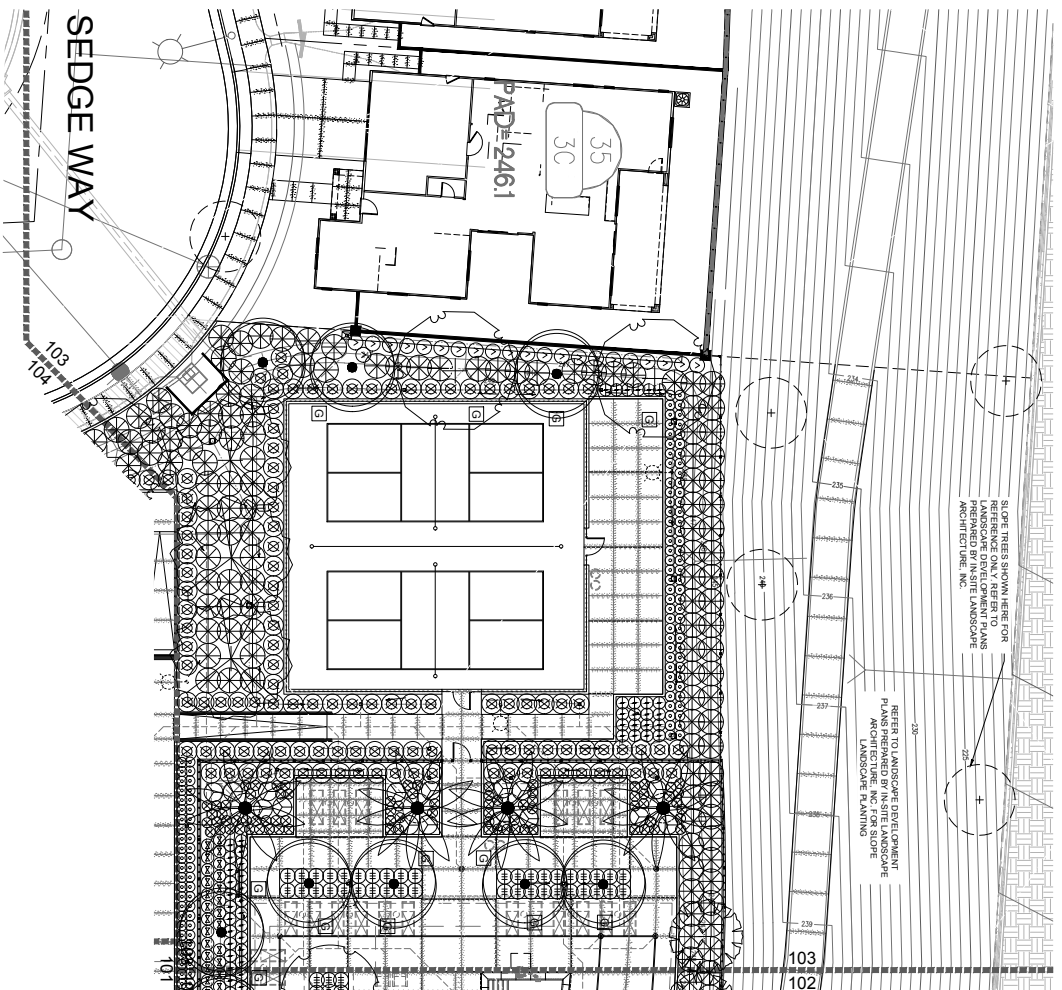
CONSTRUCTION PLAN SUBMITTAL #3

PLAN SET	ISSUE DATE	PROJECT STATUS	LOG

ISSUE NO. 173072-01
DRAWN BY: ACHW
PRINT DATE: 08/27/20
APN#964-640-011
PA20-0278

PLANTING SCHEDULE

L4.002



SLOPE TREES SHOWN HERE FOR REFERENCE ONLY. REFER TO THE LANDSCAPE PLANS PREPARED BY IN-SITE LANDSCAPE ARCHITECTURE, INC.

REFER TO LANDSCAPE DEVELOPMENT PLAN ARCHITECTURE, INC FOR SLOPE LANDSCAPE PLANTING

PLANTING NOTES:

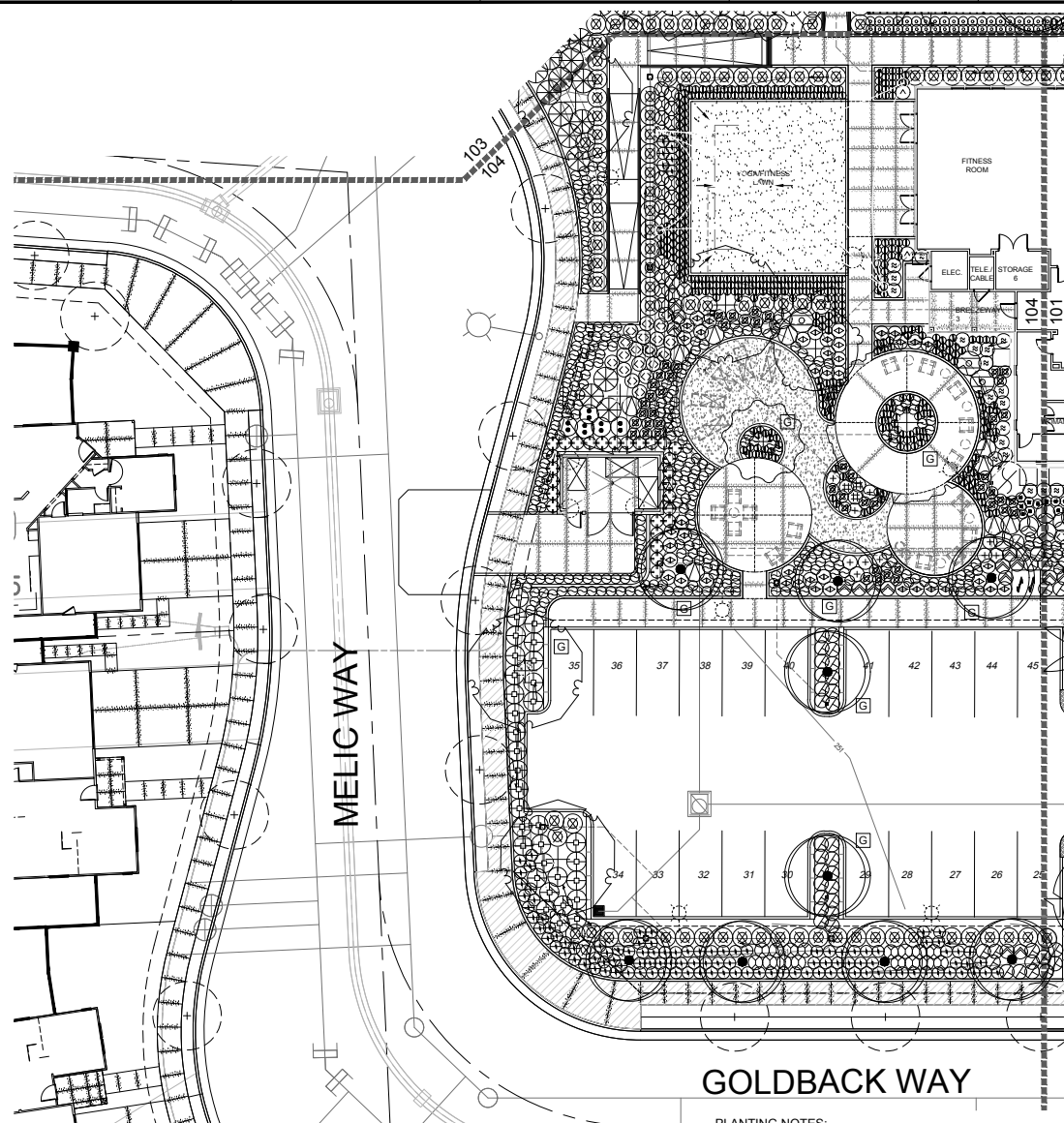
1. ALL LANDSCAPE AREAS SHALL SHEET FLOW @ 2% MINIMUM OR DRAIN TO AREAS OPENING @ 1% MINIMUM.
2. FINAL TREE AND SHRUB FOOTPRINTS MAY BE ADJUSTED IN FIELD PROPOSAL SUBJECT TO LOCATION OF THE STREET LIGHT AND UTILITIES. BEFORE INSTALLATION, VERIFY CONDITIONS WITH THE ASSISTANCE CITY INSPECTOR AND THE STREET TREE AND SHRUB PLANTATION DEVELOPERS.
3. APPLY ROPE EMBROIDERY BEFORE THE MULCH LAYERS IS INSTALLED TO PREVENT WEEDS. WEEDS SHALL BE REMOVED BEFORE FRESH MULCH IS APPLIED.
4. A MINIMUM 3" MULCH LAYER OF ORGANIC MULCH SHALL BE APPLIED ON ALL EXPOSED SOIL SURFACES OF PLANTING AREAS AND A MINIMUM 1" MULCH LAYER ON EXPOSED SURFACES OF GROUNDS COVERABLES, EXCEPT TREE AREAS OR DIRECT SEEDING APPLICATIONS WHERE MULCH IS CONTRAINDICATED. ORGANIC MULCH SHOULD BE BROWN FOREST FLOOR TYPE WOOD CHIPPED MULCH OR EQUAL, CHIP TO BE 2" OR SMALLER.
5. NICKLE TREES TO BE INSTALLED WITH LINEAR POLYETHYLENE ROOT BARRIER (2' X 20' W/ 20' PER DETAIL, EG. SHEET LA 401).
6. REFER TO POT LEGEND FOR PLANTING MATERIAL.
7. ALL TREE TRUNKS SHALL BE KEPT A MINIMUM OF 90" CLEAR FROM OUTSIDE POOL FENCE.
8. ALL TREES SHALL BE TAGGED BY THE LANDSCAPE ARCHITECT AND MEET ANSI Z601 SPECIFICATIONS FOR NURSERY STOCK. BE FREE FROM DISEASE AND DEFECTS AND TO BE PLANTED AT AN ANGLE TO THE FRONT MATERIAL. SHALL BE REMOVED AND REPLACED AS SOON AS POSSIBLE AND VERIFIED AT FINAL CITY INSPECTION OR TURN OVER.

PLANTING SCHEDULE:

TREES	BOTANICAL COMMON NAME
	RHUS TYPHINA RED BUD
	QUERCUS LAEVIS WHITE OAK
	QUERCUS PRINUS PINNACLED OAK
	QUERCUS MACROCARPA BURR OAK
	QUERCUS COCCINEA SCARLET OAK
	QUERCUS FALCATA SWAN HILL OAK
	QUERCUS PRINUS PINNACLED OAK
	QUERCUS MACROCARPA BURR OAK
	QUERCUS LAEVIS WHITE OAK
	QUERCUS PRINUS PINNACLED OAK
	QUERCUS MACROCARPA BURR OAK
	QUERCUS LAEVIS WHITE OAK
	QUERCUS PRINUS PINNACLED OAK
	QUERCUS MACROCARPA BURR OAK
	QUERCUS LAEVIS WHITE OAK
	QUERCUS PRINUS PINNACLED OAK
	QUERCUS MACROCARPA BURR OAK
	QUERCUS LAEVIS WHITE OAK
	QUERCUS PRINUS PINNACLED OAK
	QUERCUS MACROCARPA BURR OAK
	QUERCUS LAEVIS WHITE OAK
	QUERCUS PRINUS PINNACLED OAK
	QUERCUS MACROCARPA BURR OAK
	QUERCUS LAEVIS WHITE OAK
	QUERCUS PRINUS PINNACLED OAK
	QUERCUS MACROCARPA BURR OAK
	QUERCUS LAEVIS WHITE OAK
	QUERCUS PRINUS PINNACLED OAK
	QUERCUS MACROCARPA BURR OAK
	QUERCUS LAEVIS WHITE OAK
	QUERCUS PRINUS PINNACLED OAK
	QUERCUS MACROCARPA BURR OAK
	QUERCUS LAEVIS WHITE OAK
	QUERCUS PRINUS PINNACLED OAK
	QUERCUS MACROCARPA BURR OAK
	QUERCUS LAEVIS WHITE OAK
	QUERCUS PRINUS PINNACLED OAK
	QUERCUS MACROCARPA BURR OAK
	QUERCUS LAEVIS WHITE OAK
	QUERCUS PRINUS PINNACLED OAK
	QUERCUS MACROCARPA BURR OAK
	QUERCUS LAEVIS WHITE OAK
	QUERCUS PRINUS PINNACLED OAK
	QUERCUS MACROCARPA BURR OAK
	QUERCUS LAEVIS WHITE OAK
	QUERCUS PRINUS PINNACLED OAK
	QUERCUS MACROCARPA BURR OAK
	QUERCUS LAEVIS WHITE OAK
	QUERCUS PRINUS PINNACLED OAK
	QUERCUS MACROCARPA BURR OAK
	QUERCUS LAEVIS WHITE OAK
	QUERCUS PRINUS PINNACLED OAK
	QUERCUS MACROCARPA BURR OAK
	QUERCUS LAEVIS WHITE OAK
	QUERCUS PRINUS PINNACLED OAK
	QUERCUS MACROCARPA BURR OAK
	QUERCUS LAEVIS WHITE OAK
	QUERCUS PRINUS PINNACLED OAK
	QUERCUS MACROCARPA BURR OAK
	QUERCUS LAEVIS WHITE OAK
	QUERCUS PRINUS PINNACLED OAK
	QUERCUS MACROCARPA BURR OAK
	QUERCUS LAEVIS WHITE OAK
	QUERCUS PRINUS PINNACLED OAK
	QUERCUS MACROCARPA BURR OAK
	QUERCUS LAEVIS WHITE OAK
	QUERCUS PRINUS PINNACLED OAK
	QUERCUS MACROCARPA BURR OAK
	QUERCUS LAEVIS WHITE OAK
	QUERCUS PRINUS PINNACLED OAK
	QUERCUS MACROCARPA BURR OAK
	QUERCUS LAEVIS WHITE OAK
	QUERCUS PRINUS PINNACLED OAK
	QUERCUS MACROCARPA BURR OAK
	QUERCUS LAEVIS WHITE OAK
	QUERCUS PRINUS PINNACLED OAK
	QUERCUS MACROCARPA BURR OAK
	QUERCUS LAEVIS WHITE OAK
	QUERCUS PRINUS PINNACLED OAK
	QUERCUS MACROCARPA BURR OAK
	QUERCUS LAEVIS WHITE OAK
	QUERCUS PRINUS PINNACLED OAK
	QUERCUS MACROCARPA BURR OAK
	QUERCUS LAEVIS WHITE OAK
	QUERCUS PRINUS PINNACLED OAK
	QUERCUS MACROCARPA BURR OAK
	QUERCUS LAEVIS WHITE OAK
	QUERCUS PRINUS PINNACLED OAK
	QUERCUS MACROCARPA BURR OAK
	QUERCUS LAEVIS WHITE OAK
	QUERCUS PRINUS PINNACLED OAK
	QUERCUS MACROCARPA BURR OAK
	QUERCUS LAEVIS WHITE OAK
	QUERCUS PRINUS PINNACLED OAK
	QUERCUS MACROCARPA BURR OAK
	QUERCUS LAEVIS WHITE OAK
	QUERCUS PRINUS PINNACLED OAK
	QUERCUS MACROCARPA BURR OAK
	QUERCUS LAEVIS WHITE OAK
	QUERCUS PRINUS PINNACLED OAK
	QUERCUS MACROCARPA BURR OAK
	QUERCUS LAEVIS WHITE OAK
	QUERCUS PRINUS PINNACLED OAK
	QUERCUS MACROCARPA BURR OAK
	QUERCUS LAEVIS WHITE OAK
	QUERCUS PRINUS PINNACLED OAK
	QUERCUS MACROCARPA BURR OAK
	QUERCUS LAEVIS WHITE OAK
	QUERCUS PRINUS PINNACLED OAK
	QUERCUS MACROCARPA BURR OAK
	QUERCUS LAEVIS WHITE OAK
	QUERCUS PRINUS PINNACLED OAK
	QUERCUS MACROCARPA BURR OAK
	QUERCUS LAEVIS WHITE OAK
	QUERCUS PRINUS PINNACLED OAK
	QUERCUS MACROCARPA BURR OAK
	QUERCUS LAEVIS WHITE OAK
	QUERCUS PRINUS PINNACLED OAK
	QUERCUS MACROCARPA BURR OAK
	QUERCUS LAEVIS WHITE OAK
	QUERCUS PRINUS PINNACLED OAK
	QUERCUS MACROCARPA BURR OAK
	QUERCUS LAEVIS WHITE OAK
	QUERCUS PRINUS PINNACLED OAK
	QUERCUS MACROCARPA BURR OAK
	QUERCUS LAEVIS WHITE OAK
	QUERCUS PRINUS PINNACLED OAK
	QUERCUS MACROCARPA BURR OAK
	QUERCUS LAEVIS WHITE OAK
	QUERCUS PRINUS PINNACLED OAK
	QUERCUS MACROCARPA BURR OAK
	QUERCUS LAEVIS WHITE OAK
	QUERCUS PRINUS PINNACLED OAK
	QUERCUS MACROCARPA BURR OAK
	QUERCUS LAEVIS WHITE OAK
	QUERCUS PRINUS PINNACLED OAK
	QUERCUS MACROCARPA BURR OAK
	QUERCUS LAEVIS WHITE OAK
	QUERCUS PRINUS PINNACLED OAK
	QUERCUS MACROCARPA BURR OAK
	QUERCUS LAEVIS WHITE OAK
	QUERCUS PRINUS PINNACLED OAK
	QUERCUS MACROCARPA BURR OAK
	QUERCUS LAEVIS WHITE OAK
	QUERCUS PRINUS PINNACLED OAK
	QUERCUS MACROCARPA BURR OAK
	QUERCUS LAEVIS WHITE OAK
	QUERCUS PRINUS PINNACLED OAK
	QUERCUS MACROCARPA BURR OAK
	QUERCUS LAEVIS WHITE OAK
	QUERCUS PRINUS PINNACLED OAK
	QUERCUS MACROCARPA BURR OAK
	QUERCUS LAEVIS WHITE OAK
	QUERCUS PRINUS PINNACLED OAK
	QUERCUS MACROCARPA BURR OAK
	QUERCUS LAEVIS WHITE OAK
	QUERCUS PRINUS PINNACLED OAK
	QUERCUS MACROCARPA BURR OAK
	QUERCUS LAEVIS WHITE OAK
	QUERCUS PRINUS PINNACLED OAK
	QUERCUS MACROCARPA BURR OAK
	QUERCUS LAEVIS WHITE OAK
	QUERCUS PRINUS PINNACLED OAK
	QUERCUS MACROCARPA BURR OAK
	QUERCUS LAEVIS WHITE OAK
	QUERCUS PRINUS PINNACLED OAK
	QUERCUS MACROCARPA BURR OAK
	QUERCUS LAEVIS WHITE OAK
	QUERCUS PRINUS PINNACLED OAK
	QUERCUS MACROCARPA BURR OAK
	QUERCUS LAEVIS WHITE OAK
	QUERCUS PRINUS PINNACLED OAK
	QUERCUS MACROCARPA BURR OAK
	QUERCUS LAEVIS WHITE OAK
	QUERCUS PRINUS PINNACLED OAK
	QUERCUS MACROCARPA BURR OAK
	QUERCUS LAEVIS WHITE OAK
	QUERCUS PRINUS PINNACLED OAK
	QUERCUS MACROCARPA BURR OAK
	QUERCUS LAEVIS WHITE OAK
	QUERCUS PRINUS PINNACLED OAK
	QUERCUS MACROCARPA BURR OAK
	QUERCUS LAEVIS WHITE OAK
	QUERCUS PRINUS PINNACLED OAK
	QUERCUS MACROCARPA BURR OAK
	QUERCUS LAEVIS WHITE OAK
	QUERCUS PRINUS PINNACLED OAK
	QUERCUS MACROCARPA BURR OAK
	QUERCUS LAEVIS WHITE OAK
	QUERCUS PRINUS PINNACLED OAK
	QUERCUS MACROCARPA BURR OAK
	QUERCUS LAEVIS WHITE OAK
	QUERCUS PRINUS PINNACLED OAK
	QUERCUS MACROCARPA BURR OAK
	QUERCUS LAEVIS WHITE OAK
	QUERCUS PRINUS PINNACLED OAK
	QUERCUS MACROCARPA BURR OAK
	QUERCUS LAEVIS WHITE OAK
	QUERCUS PRINUS PINNACLED OAK
	QUERCUS MACROCARPA BURR OAK
	QUERCUS LAEVIS WHITE OAK
	QUERCUS PRINUS PINNACLED OAK
	QUERCUS MACROCARPA BURR OAK
	QUERCUS LAEVIS WHITE OAK
	QUERCUS PRINUS PINNACLED OAK
	QUERCUS MACROCARPA BURR OAK
	QUERCUS LAEVIS WHITE OAK
	QUERCUS PRINUS PINNACLED OAK
	QUERCUS MACROCARPA BURR OAK
	QUERCUS LAEVIS WHITE OAK
	QUERCUS PRINUS PINNACLED OAK
	QUERCUS MACROCARPA BURR OAK
	QUERCUS LAEVIS WHITE OAK
	QUERCUS PRINUS PINNACLED OAK
	QUERCUS MACROCARPA BURR OAK
	QUERCUS LAEVIS WHITE OAK
	QUERCUS PRINUS PINNACLED OAK
	QUERCUS MACROCARPA BURR OAK
	QUERCUS LAEVIS WHITE OAK
	QUERCUS PRINUS PINNACLED OAK
	QUERCUS MACROCARPA BURR OAK
	QUERCUS LAEVIS WHITE OAK
	QUERCUS PRINUS PINNACLED OAK
	QUERCUS MACROCARPA BURR OAK
	QUERCUS LAEVIS WHITE OAK
	QUERCUS PRINUS PINNACLED OAK
	QUERCUS MACROCARPA BURR OAK
	QUERCUS LAEVIS WHITE OAK
	QUERCUS PRINUS PINNACLED OAK
	QUERCUS MACROCARPA BURR OAK
	QUERCUS LAEVIS WHITE OAK
	QUERCUS PRINUS PINNACLED OAK
	QUERCUS MACROCARPA BURR OAK
	QUERCUS LAEVIS WHITE OAK
	QUERCUS PRINUS PINNACLED OAK
	QUERCUS MACROCARPA BURR OAK
	QUERCUS LAEVIS WHITE OAK
	QUERCUS PRINUS PINNACLED OAK
	QUERCUS MACROCARPA BURR OAK
	QUERCUS LAEVIS WHITE OAK
	QUERCUS PRINUS PINNACLED OAK
	QUERCUS MACROCARPA BURR OAK
	QUERCUS LAEVIS WHITE OAK
	QUERCUS PRINUS PINNACLED OAK
	QUERCUS MACROCARPA BURR OAK
	QUERCUS LAEVIS WHITE OAK
	QUERCUS PRINUS PINNACLED OAK
	QUERCUS MACROCARPA BURR OAK
	QUERCUS LAEVIS WHITE OAK
	QUERCUS PRINUS PINNACLED OAK
	QUERCUS MACROCARPA BURR OAK
	QUERCUS LAEVIS WHITE OAK
	QUERCUS PRINUS PINNACLED OAK
	QUERCUS MACROCARPA BURR OAK
	QUERCUS LAEVIS WHITE OAK
	QUERCUS PRINUS PINNACLED OAK
	QUERCUS MACROCARPA BURR OAK
	QUERCUS LAEVIS WHITE OAK
	QUERCUS PRINUS PINNACLED OAK
	QUERCUS MACROCARPA BURR OAK
	QUERCUS LAEVIS WHITE OAK
	QUERCUS PRINUS PINNACLED OAK
	QUERCUS MACROCARPA BURR OAK
	QUERCUS LAEVIS

L:\173072-SOMMERS BEND\04\0203-SHEETS\01 - RECREATION CENTER\2-WD\A.101 - PLANTING PLANS.DWG

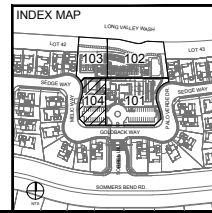
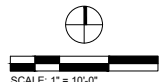
8/27/2020 3:29 PM



GOLDBACK WAY

PLANTING NOTES:

1. ALL LANDSCAPE AREAS SHALL SHEET FLOW @ 2% MINIMUM OR DRAIN TO AREA DRAINS @ 1% MINIMUM.
2. FINAL TREE AND SHRUB LOCATIONS MAY BE ADJUSTED IN FIELD PENDING AS BUILT LOCATION OF THE STREET LIGHT AND UTILITIES. PRIOR TO INSTALLATION, VERIFY & COORDINATE WITH ON-SITE CITY INSPECTOR AND OWNER/LANDSCAPE ARCHITECT ON TREE AND SHRUB LOCATIONS.
3. APPLY PRE-EMERGENT BEFORE THE MULCH LAYER IS INSTALLED TO PREVENT WEEDS. WEEDS SHALL BE REMOVED BEFORE 2" HIGH OR WEED SEED DEVELOPS.
4. A MINIMUM 3-INCH LAYER OF ORGANIC MULCH SHALL BE APPLIED ON ALL EXPOSED SOIL SURFACES OF PLANTING AREAS AND A MINIMUM 1-INCH LAYER ON EXPOSED SURFACES OF GROUND COVER AREAS, EXCEPT TURF AREAS OR DIRECT SEEDING APPLICATIONS WHERE MULCH IS CONTRAINDICATED. ORGANIC MULCH SHOULD BE BROWN FOREST FLOOR TYPE WOOD CHIPPED MULCH OR EQUAL - CHIP TO BE 2" OR SMALLER.
5. [G] INDICATE TREES TO BE INSTALLED WITH LINEAR POLYETHYLENE ROOT BARRIER(12"D X 20'W) PER DETAIL 'G', SHEET L4.401.
6. REFER TO POT LEGEND FOR PLANTING MATERIAL.
7. ALL TREE TRUNKS SHALL BE KEPT A MINIMUM OF 5'-0" CLEAR FROM OUTSIDE POOL FENCE.
8. ALL TREES SHALL BE TAGGED BY THE LANDSCAPE ARCHITECT AND MEET ANSI Z60.1 SPECIFICATIONS FOR NURSERY STOCK; BE FREE FROM DEFECTS INCLUDING CO-DOMINANT STEMS, AND GIRDLING ROOTS; ROOT FLARE SHALL BE VISIBLE AT TOP OF SOIL LEVEL. STREET TREES SHALL HAVE A MINIMUM 5' TRUNK FREE OF BRANCHES. DEFECTIVE PLANT MATERIAL SHALL BE REMOVED AND REPLACED AS SOON AS POSSIBLE AND VERIFIED AT FINAL CITY INSPECTION OR TURN OVER.



PLANTING SCHEDULE:

TREES	BOTANICAL / COMMON NAME	SHRUBS	BOTANICAL / COMMON NAME
+	ARBUTUS 'MARINA'	✓	AGAVE 'BLUE GLOW'
+	ARBUTUS MULTI-TRUNK	⊗	BLUE GLOW AGAVE
+	CERCIS CANADENSIS 'OKLAHOMA'	⊗	ALOE X 'BLUE ELF'
+	OKLAHOMA REDBUD	⊗	ALOE
⊙	GEUERA PARVIFLORA	⊙	ARISTIDA PURPUREA
⊙	AUSTRALIAN WILLOW	⊙	PURPLE THREEAWN
⊙	OLEA EUROPAEA 'SWAN HILL' TM	⊕	ASCLEPIAS FASCICULARIS
⊙	SWAN HILL OLIVE	⊕	NARROW LEAVED MILKWEED
+	PARKINSONIA X 'DESERT MUSEUM'	⊗	CAREX DIVULSA
+	DESERT MUSEUM PALO VERDE	⊗	BERKELEY SEDGE
✳	PHOENIX DACTYLIFERA 'MEDJOO'	⊕	CEANOTHUS MARITIMUS 'SIERRA GOLD'
✳	DATE PALM	⊕	POINT SIERRA CEANOTHUS
+	PLATANUS RACEMOSA 'ROBERTS'	⊕	EREMOPHILA GLABRA 'MINGENEW GOLD'
+	ROBERTS CALIFORNIA SYCAMORE	⊕	EMU BUSH
⊙	QUERCUS AGRIFOLIA	⊕	ERIGERON GLAUCUS 'WAYNE RODERICK'
⊙	COAST LIVE OAK	⊕	YELLOW SPURGE
⊙	ULMUS PARVIFOLIA 'TRUE GREEN'	⊕	EUPHORBIA RIGIDA
⊙	TRUE GREEN ELM	⊕	PINK MUHLY GRASS
⊙	WASHINGTONIA ROBUSTA	⊕	MUHLENBERGIA CAPILLARIS 'REGAL MIST'
⊙	MEXICAN FAN PALM	⊕	PINK MUHLY GRASS
		⊕	GALVEZIA SPECIOSA
		⊕	ISLAND BUSH SNAPDRAGON
		⊕	HESPERALOE PARVIFLORA
		⊕	RED YUCCA
		⊕	HETEROMELES ARBUTIFOLIA
		⊕	TOYON
		⊕	LANTANA X 'NEW GOLD'
		⊕	NEW GOLD LANTANA
		⊕	LAVANDULA ANGUSTIFOLIA
		⊕	ENGLISH LAVENDER
		⊕	LAVANDULA STOECHAS 'OTTO QUAST'
		⊕	SPANISH LAVENDER
		⊕	LEUCOPHYLLUM CANDIDUM
		⊕	VIOLET SILVERLEAF
		⊕	LIGUSTRUM TEXANUM
		⊕	TEXAS PRIVET
		⊕	LIGUSTRUM TEXANUM
		⊕	TEXAS PRIVET
		⊕	MACFADYENA UNGUI-CATI
		⊕	CAT'S CLAW CREEPER
		⊕	MIMULUS AURANTIACUS
		⊕	BUSH MONKEY FLOWER
		⊕	NOLINA PARRYI
		⊕	PARRY BEARGRASS
		⊕	OLEA EUROPAEA 'LITTLE OLLIE' TM
		⊕	LITTLE OLLIE OLIVE
		⊕	PENNISETUM SPATHIOLATUM
		⊕	RYE PURPS
		⊕	RHAMNUS CALIFORNICA 'EVE CASE'
		⊕	CALIFORNIA COFFEEBERRY
		⊕	SALVIA CHAMAEDRYOIDES
		⊕	MEXICAN BLUE SAGE
		⊕	SALVIA CLEVELANDII 'WINIFRED GILLMAN'
		⊕	CLEVELAND SAGE
		⊕	SALVIA X 'BEE'S BLISS'
		⊕	BEE'S BLISS SAGE
		⊕	SINNINGIUM BELLUM
		⊕	BLUE-HEADED GRASS
		⊕	TEUCRUM COSSONII
		⊕	CREEPING GERMANDER
		⊕	VERBENA LILACINA 'DE LA MINA'
		⊕	LILAC VERBENA
		⊕	WESTRINGIA FRUITICOSA
		⊕	COAST ROSEMARY
		⊕	EDIBLE GARDEN
		⊕	SEASONAL HERB MIX - BEST AVAILABLE
		⊕	TURF
		⊕	MARATHON I SOG

BrightView
 PLANNING
 LANDSCAPE ARCHITECTURE
 DESIGN/DESIGN
 8 HUGHES, SUITE 150
 IRVINE, CALIFORNIA 92618
 (949) 238-8800

PROJECT: TAYLOR MORRISON SOMMERS BEND REC CENTER TRACT NO. 37368 LOT 17
 SHEET NO. L4.101 OF 102 SHEETS
 DATE: 08/27/2020

PLAN REVISION DESCRIPTION

811
 Know what's below.
 Call 811 before you dig.
 THE CALL 811 PROGRAM IS A SERVICE OF CALIFORNIA

TAYLOR MORRISON
 SOMMERS BEND REC CENTER
 TRACT NO. 37368 LOT 17
 LANDSCAPE DEVELOPMENT PLANS
 32176 GOLDBACK WAY - TEMECULA, CALIFORNIA

CONSTRUCTION PLAN SUBMITTAL #3

PLAN SET / ISSUE DATE	PROJECT STATUS / LOG

ISSUE NO.	DATE	DESCRIPTION

ISSUE NO. _____

DATE _____

DESCRIPTION _____

PLANTING PLANS

L4.104